

THIS SHEET IS FOR INFORMATIONAL PURPOSES ONLY. ANY UPDATES AND CHANGES MAY NOT BE INDICATED. THE HOME WILL BE CONSTRUCTED PER CUSTOMER APPROVED PLAN AND SPECIFICATION SHEETS. ALL AVAILABLE OPTIONS AND FEATURES MAY NOT BE DEPICTED. PLEASE CONTACT A SALES REPRESENTATIVE FOR MORE INFORMATION.



B.R. Knez Construction, Inc.
8023 Crile Road - Suite 250
Concord Township, OH 44077
(440)710-0711 Fax: 639-6485
www.knez.net



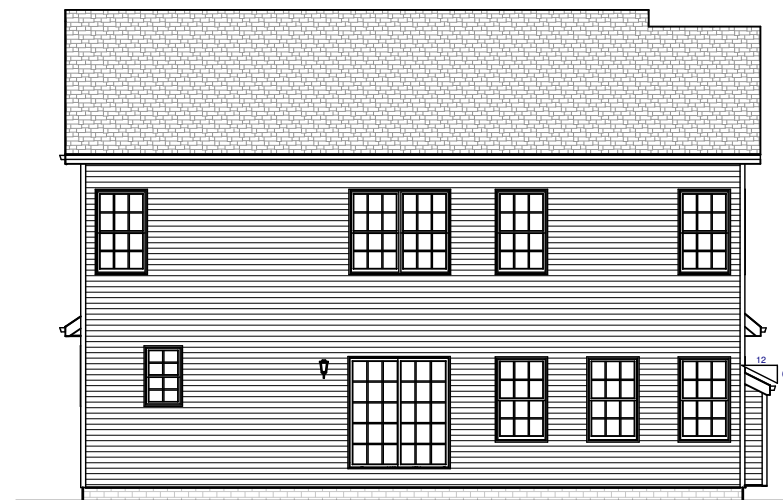
Front



Right



Left



Rear



Crestview
New Heritage Plan



Building
Customers
for Life

NOTE: This floorplan is the exclusive property of B.R. Knez Construction, Inc. and may not be duplicated or modified in any way without the expressed permission of the company. Some optional features may be shown. Actual homes constructed per agreed upon plan and specification sheet.

SHEET
1

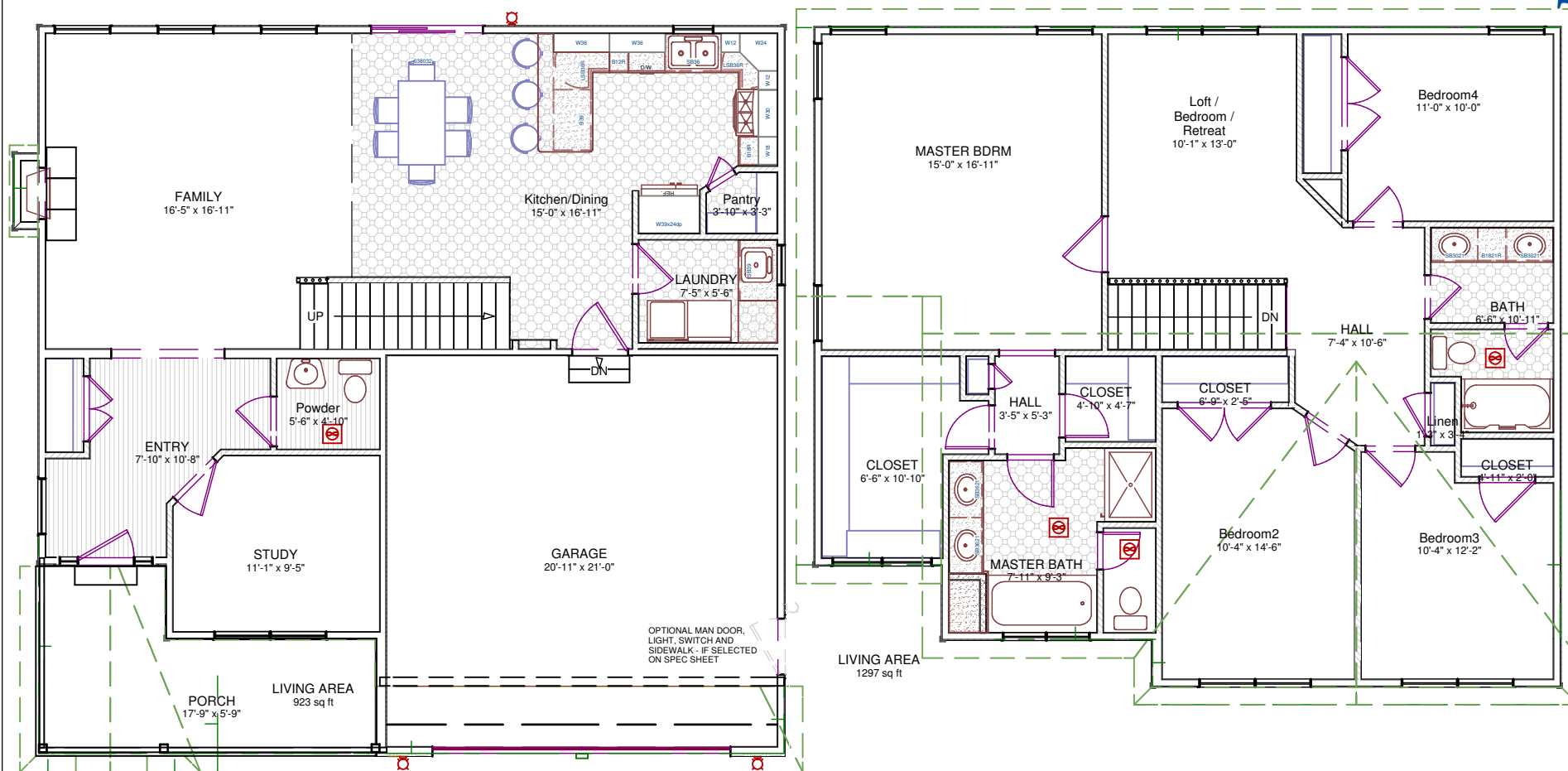
5/2/2012

Heritage Series

THIS SHEET IS FOR INFORMATIONAL PURPOSES ONLY. ANY UPDATES AND CHANGES MAY NOT BE INDICATED. THE HOME WILL BE CONSTRUCTED PER CUSTOMER APPROVED PLAN AND SPECIFICATION SHEETS. ALL AVAILABLE OPTIONS AND FEATURES MAY NOT BE DEPICTED. PLEASE CONTACT A SALES REPRESENTATIVE FOR MORE INFORMATION.



B.R. Kneez Construction, Inc.
8023 Crile Road - Suite 250
Concord Township, OH 44077
(440)710-0711 Fax: 639-6485
www.kneez.net



4 Bedroom Plan

Standard Plan Data

Main	933	sq ft
2nd	1298	sq ft
Total	2231	sq ft

Width	40	ft
Depth	39	ft
Bedrooms	4	
Baths	2.5	
Garage	2	car



Crestview
New Heritage Plan



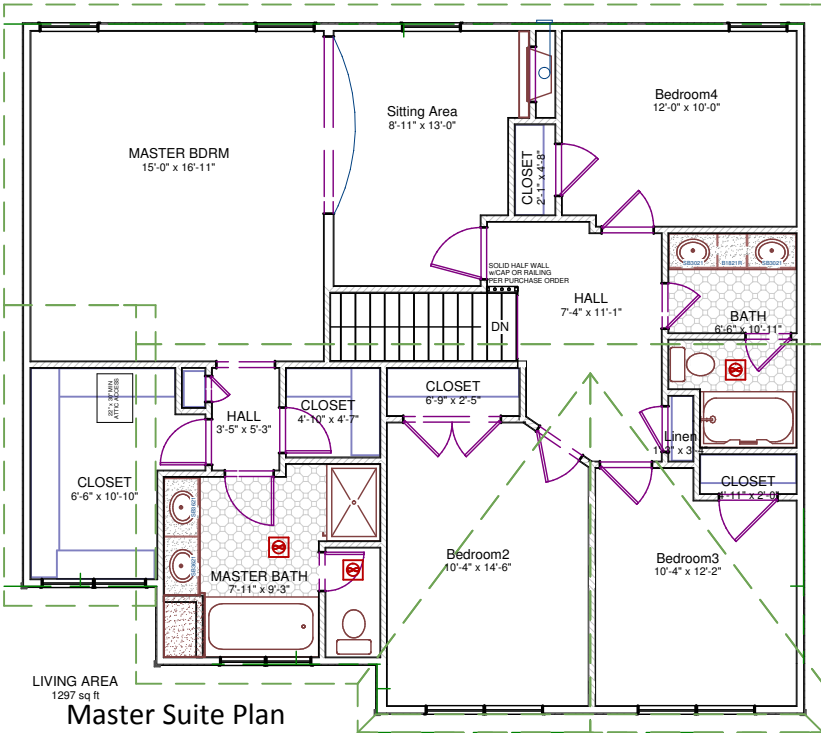
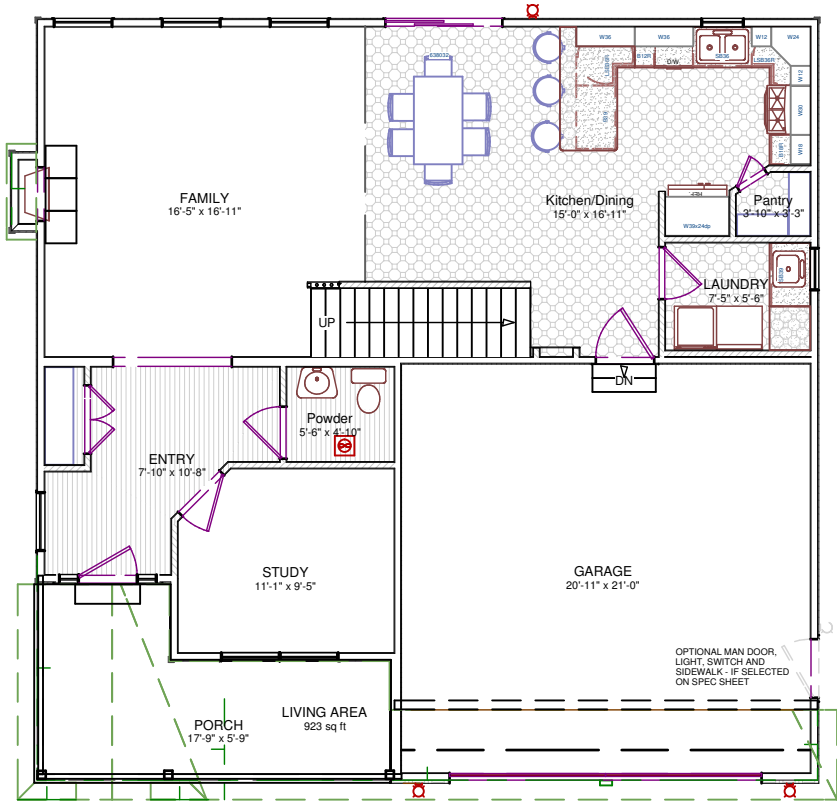
Building
Customers
for Life

SHEET
2

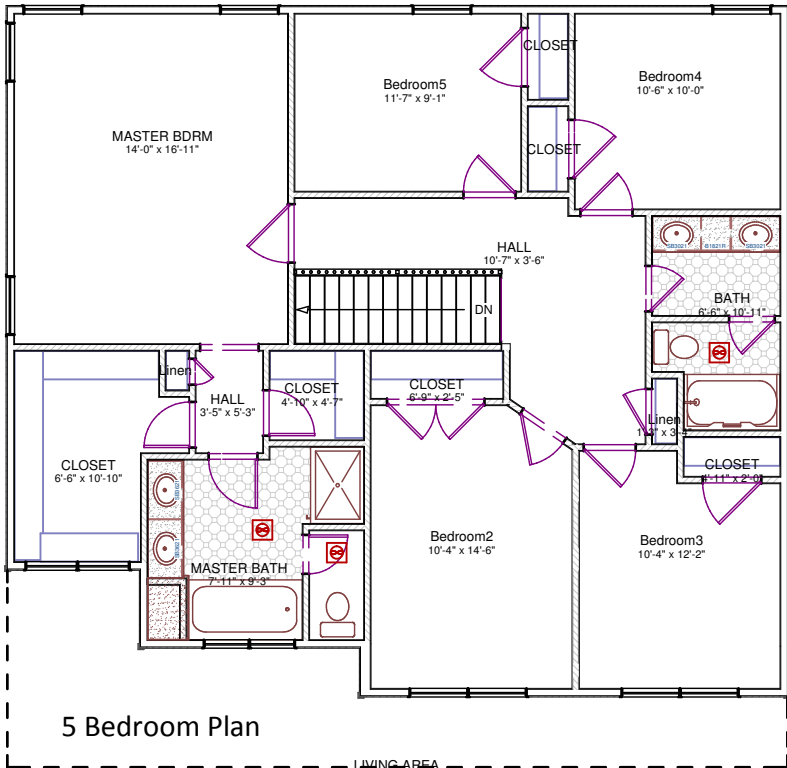
NOTE: This floorplan is the exclusive property of B.R. Kneez Construction, Inc. and may not be duplicated or modified in any way without the expressed permission of the company. Some optional features may be shown. Actual homes constructed per agreed upon plan and specification sheet.

Heritage Series

THIS SHEET IS FOR INFORMATIONAL PURPOSES ONLY. ANY UPDATES AND CHANGES MAY NOT BE INDICATED. THE HOME WILL BE CONSTRUCTED PER CUSTOMER APPROVED PLAN AND SPECIFICATION SHEETS. ALL AVAILABLE OPTIONS AND FEATURES MAY NOT BE DEPICTED. PLEASE CONTACT A SALES REPRESENTATIVE FOR MORE INFORMATION.



Master Suite Plan



5 Bedroom Plan

LIVING AREA
1291 sq ft



B.R. Knez Construction, Inc.
8023 Crile Road - Suite 250
Concord Township, OH 44077
(440)710-0711 Fax: 639-6485
www.knez.net



Crestview
New Heritage Plan



Building
Customers
for Life

SHEET
3

5/2/2012

Heritage Series

NOTE: This floorplan is the exclusive property of B.R. Knez Construction, Inc. and may not be duplicated or modified in any way without the expressed permission of the company. Some optional features may be shown. Actual homes constructed per agreed upon plan and specification sheet.

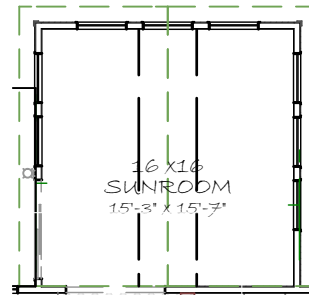
THIS SHEET IS FOR INFORMATIONAL PURPOSES ONLY. ANY UPDATES AND CHANGES MAY NOT BE INDICATED. THE HOME WILL BE CONSTRUCTED PER CUSTOMER APPROVED PLAN AND SPECIFICATION SHEETS. ALL AVAILABLE OPTIONS AND FEATURES MAY NOT BE DEPICTED. PLEASE CONTACT A SALES REPRESENTATIVE FOR MORE INFORMATION.



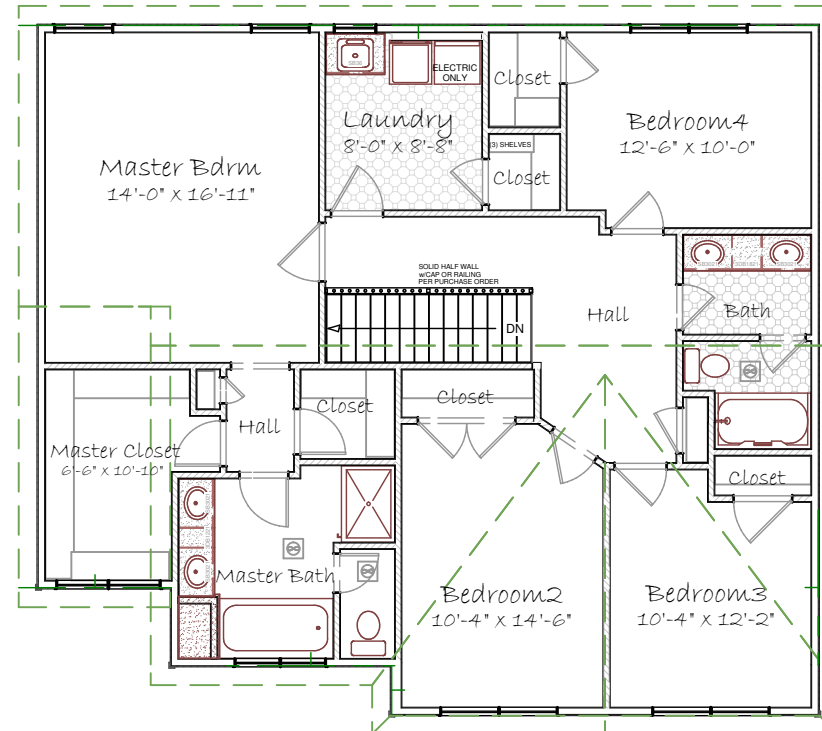
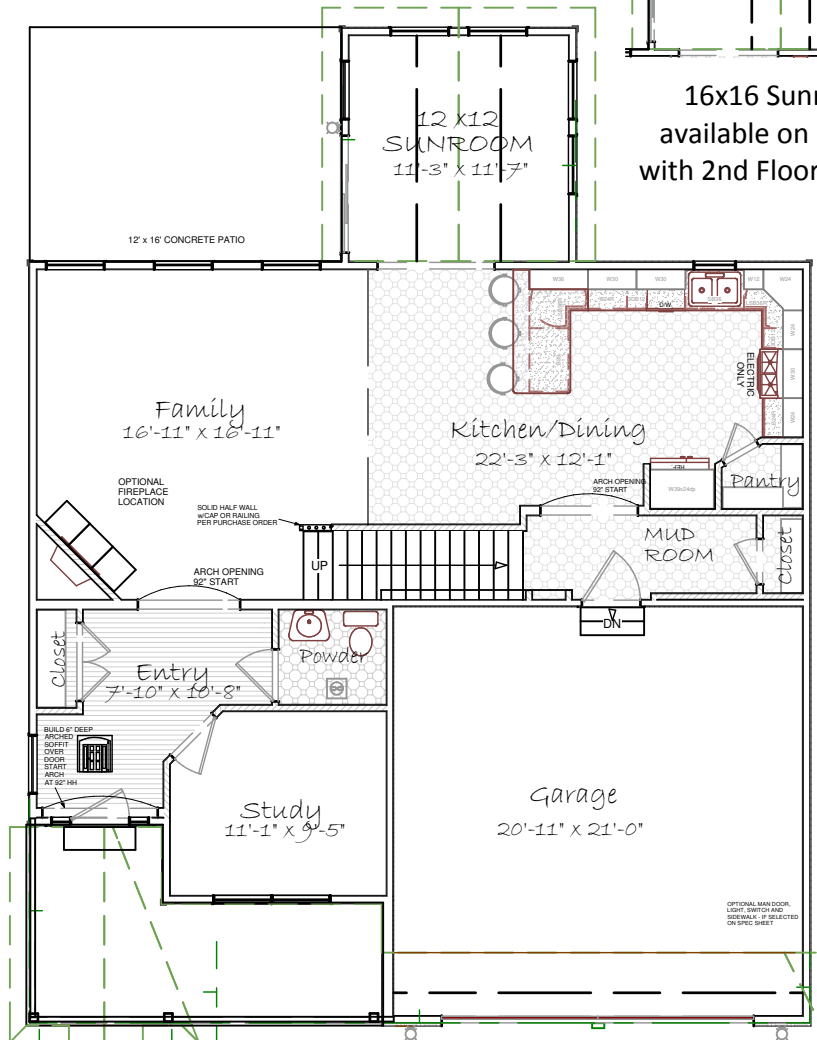
B.R. Knez Construction, Inc.
8023 Crile Road - Suite 250
Concord Township, OH 44077
(440)710-0711 Fax: 639-6485
www.knez.net



16x16 Sunroom



16x16 Sunroom
available on models
with 2nd Floor Laundry



Available Options: 2nd Floor Laundry, Sunroom, Corner Fireplace

NOTE: This floorplan is the exclusive property of B.R. Knez Construction, Inc. and may not be duplicated or modified in any way without the expressed permission of the company. Some optional features may be shown. Actual homes constructed per agreed upon plan and specification sheet.

Crestview

New Heritage Plan

*Building
Customers
for Life*

SHEET
4
5/2/2012

Heritage Series